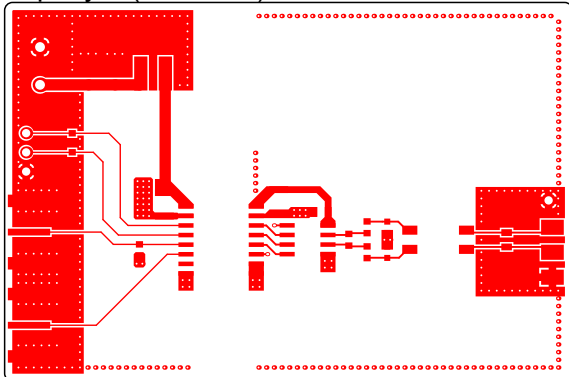
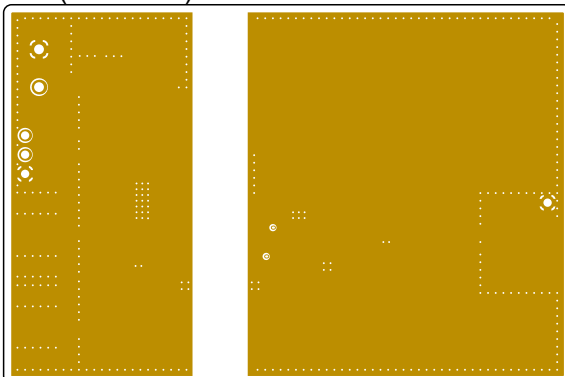


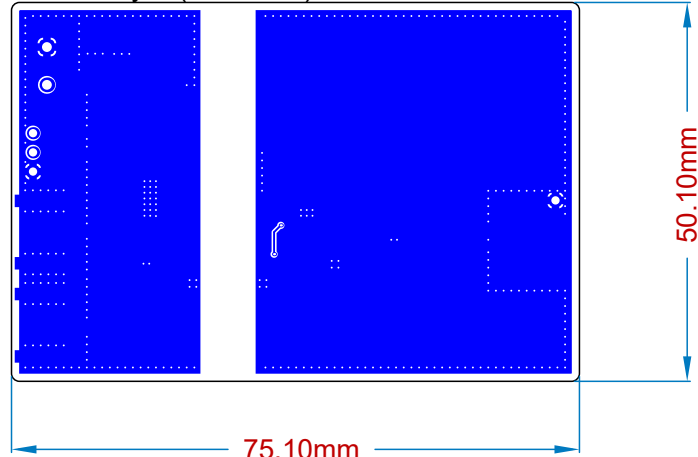
TopLayer (Scale 1:1)



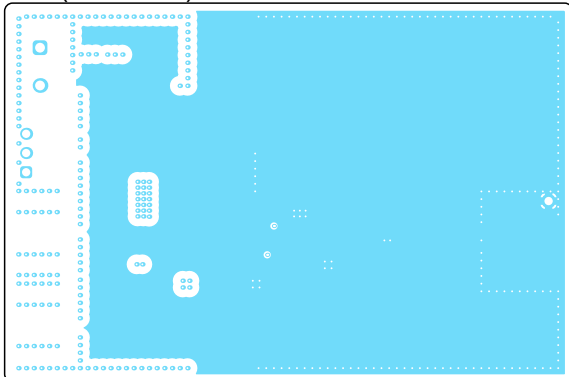
Int1 (Scale 1:1)



BottomLayer (Scale 1:1)



Int2 (Scale 1:1)



Coupling Capacitance roughly 160pF between Pri and Sec GND

Area roughly 44x14mm²

Distance Int1 - Int2 = 1.2mm - Core Epsilon $\epsilon_r = 4.6$

Distance Int2 - Bot = 0.14mm - PP Epsilon $\epsilon_r = 3.95$

Layer Stack Legend

	Material	Layer	Thickness	Dielectric Material	Type	Gerber
		TopOverlay			Legend	GTO
	Surface Material	TopSolder	0.03mm	SM-001	Solder Mask	GTS
	CF-004	TopLayer	0.04mm		Signal	GTL
	Prepreg		0.07mm	PP-017	Dielectric	
	Prepreg		0.07mm	PP-017	Dielectric	
	CF-004	Int1	0.04mm		Signal	G1
	Core		1.20mm	Core-039	Dielectric	
	CF-004	Int2	0.04mm		Signal	G2
	Prepreg		0.07mm	PP-017	Dielectric	
	Prepreg		0.07mm	PP-017	Dielectric	
	CF-004	BottomLayer	0.04mm		Signal	GBL
	Surface Material	BottomSolder	0.03mm	SM-001	Solder Mask	GBS
		BottomOverlay			Legend	GBO

Total thickness: 1.67mm